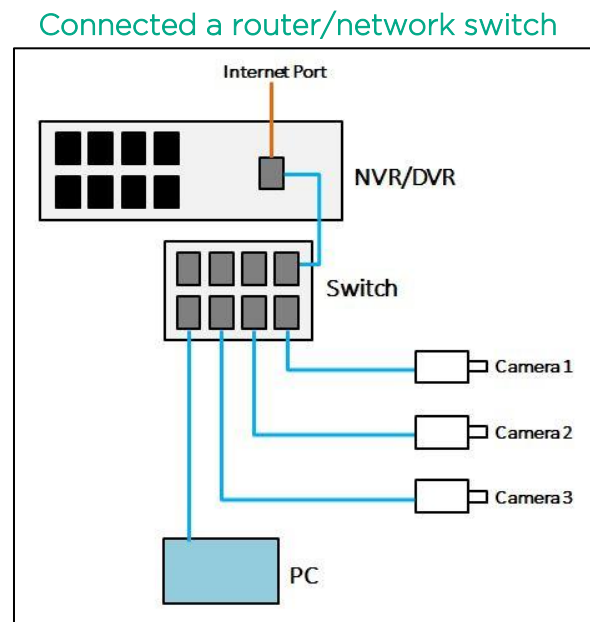
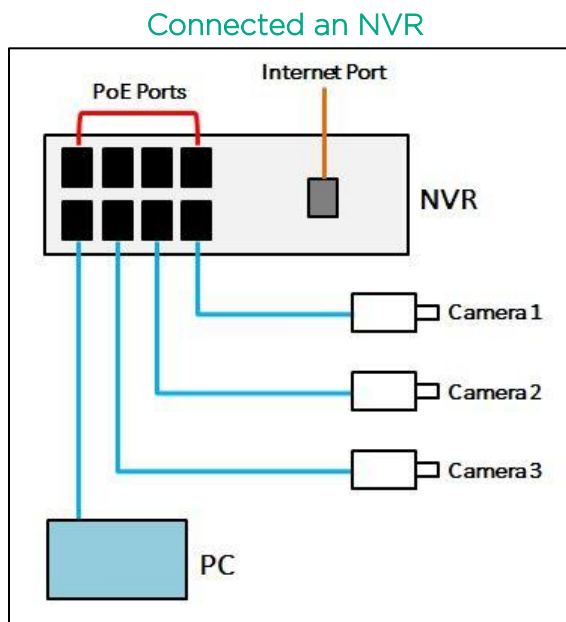


How to activate a Capture Advance IP Camera

This document outlines the steps on how to activate a Capture Advance IP Camera.

Preparation:

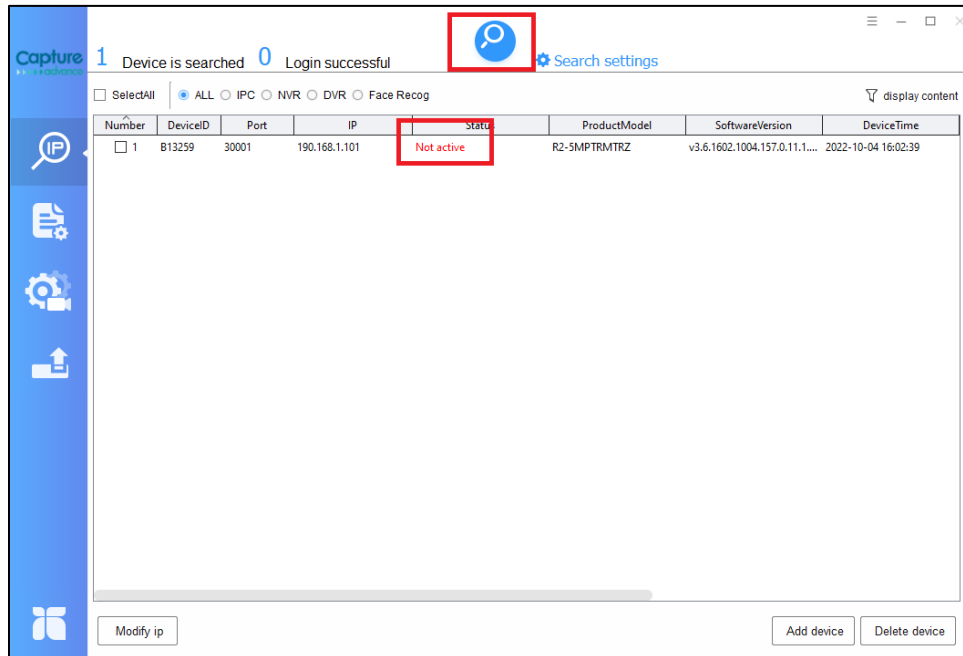
1. Download the Capture Advance Tool from this link:
https://dy47zo3o04pkc.cloudfront.net/CaptureADV_Tool_1.9.9.exe
Note: The IP camera can be activated using the Capture Advance Tool or the IP camera's webUI. The Capture ADV Tool is currently available for Windows OS only.
2. Connect the IP camera to a router/switch or NVR directly.
Note: If the IP camera will be connected to a router or network switch, it will also require a power adapter.



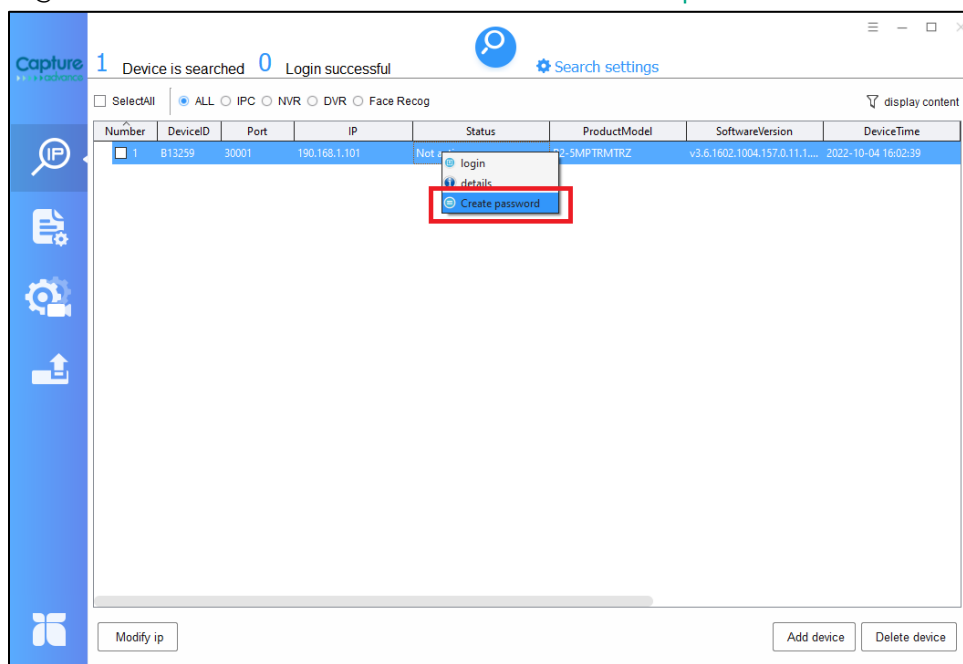
3. Ensure that the PC is linked to the same network as the IP camera.
 - a. If the IP camera is attached to the PoE port of the NVR, the computer should follow the internal/PoE IP address of the NVR.
 - b. If the IP camera is connected to a router/network switch, the computer should follow the IP address of the router/network switch.

Activating the IP camera using the Capture Advance Tool

1. Open Capture ADV Tool and select the **Search** button. By default, the DCHP is turned on, and the IP camera will use whatever IP address is assigned to it wherever it is connected. The IP camera will show a '**Not Active**' status.



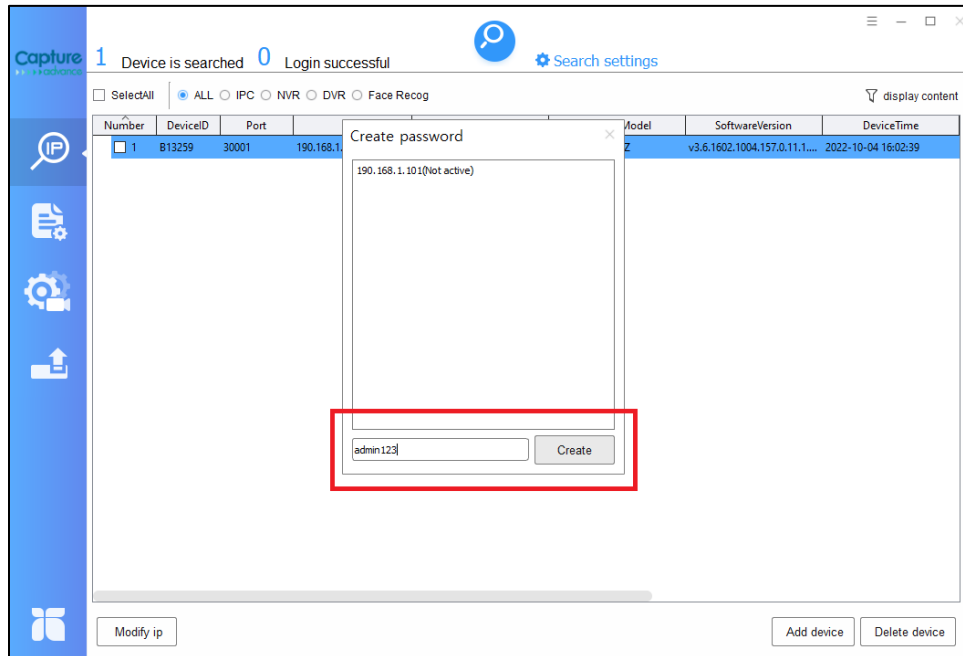
2. Right click on the IP camera and select **Create password**.



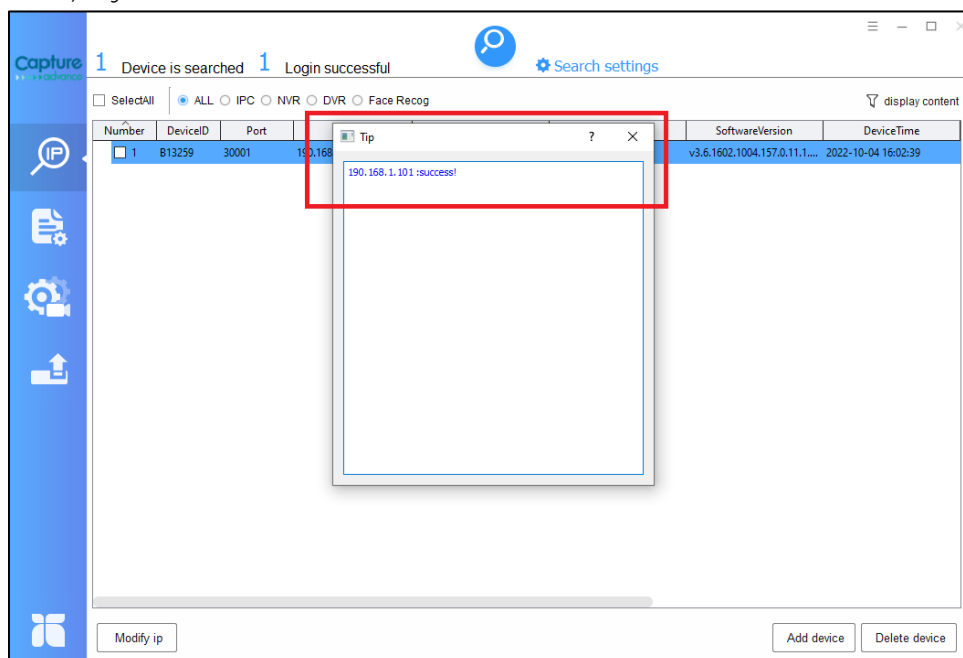
3. Enter your preferred password for the IP camera and click **Create**.

Please note:

- Password length must be at least 8 characters.
- Password must include at least one or any combination of the following: numbers, uppercase letters and lowercase letters.
- Password must not contain any special characters.

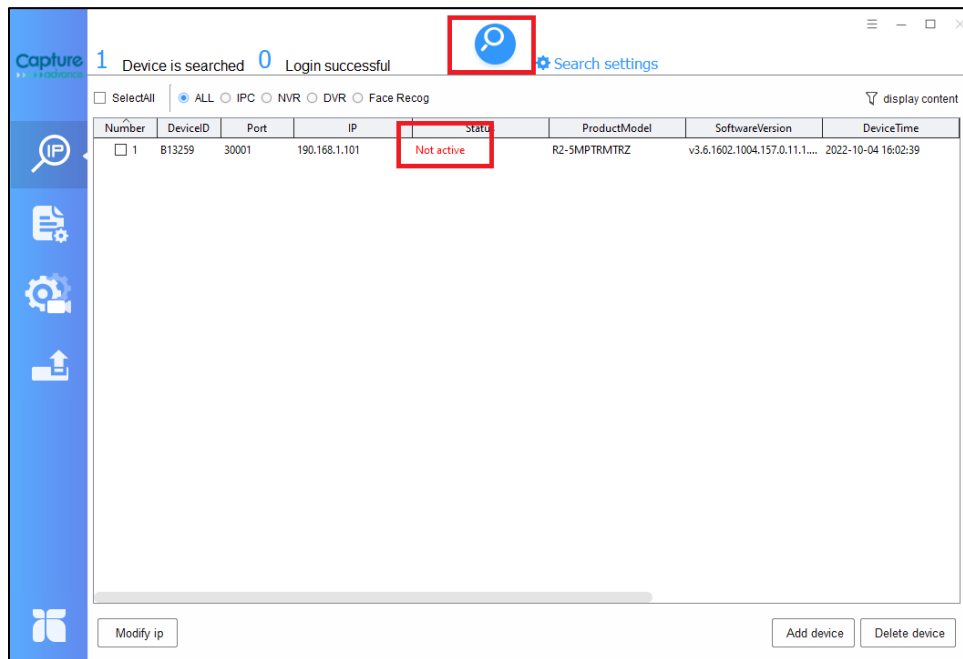


4. After creating a password, you will get a notice indicating that the IP camera password was successfully created. You can now use the IP camera or connect it to a third-party NVR/Hybrid DVR.

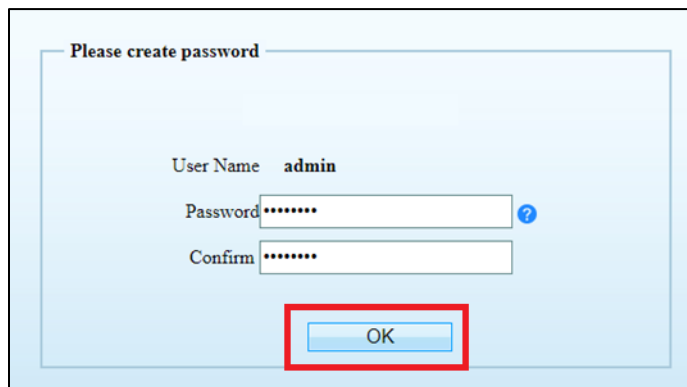


Activating the IP camera using a web browser

1. Open Capture ADV Tool and select the **Search** button. By default, the DHCP is turned on, and the IP camera will use whatever IP address is assigned to it wherever it is connected. The IP camera will show a 'Not Active' status. You may also try using the camera's default IP address – **192.168.0.120**.



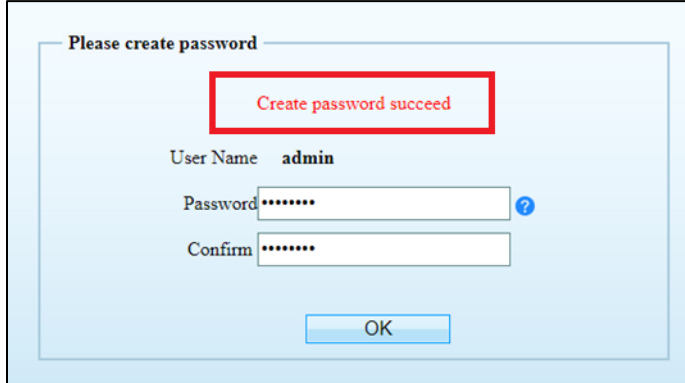
2. Double-click the IP camera in the Capture Advance Tool to access the webUI from a web browser. You can also open a browser and enter the camera's IP address into the address bar. It will ask to create a password for the IP camera. Enter your preferred password and click **OK**.



Please note:

- Password length must be at least 8 characters.
- Password must include at least one or any combination of the following: numbers, uppercase letters and lowercase letters.
- Password must not contain any special characters.

3. After creating a password, you will get a notice indicating that the IP camera password was successfully created. You can now use the IP camera or connect it to a third-party NVR/Hybrid DVR.



The screenshot shows a web interface titled "Please create password". At the top, a red-bordered box contains the text "Create password succeed". Below this, the "User Name" is set to "admin". There are two password fields: "Password" and "Confirm", both containing masked characters (dots). A blue question mark icon is next to the "Password" field. At the bottom, there is an "OK" button.